

**LX172,LX173,LX176,
LX178,LX186,LX188
Lawn Tractors**



JOHN DEERE

PARTS CATALOG

**LX172, LX173, LX176, LX178,
LX186 and LX188 Lawn Tractors**

PC2317 (OCT-08) English

John Deere Horicon Works

Worldwide Edition
Litho in U.S.A. (Revised)
COPYRIGHT © 2008
DEERE & COMPANY
Moline, Illinois
All rights reserved

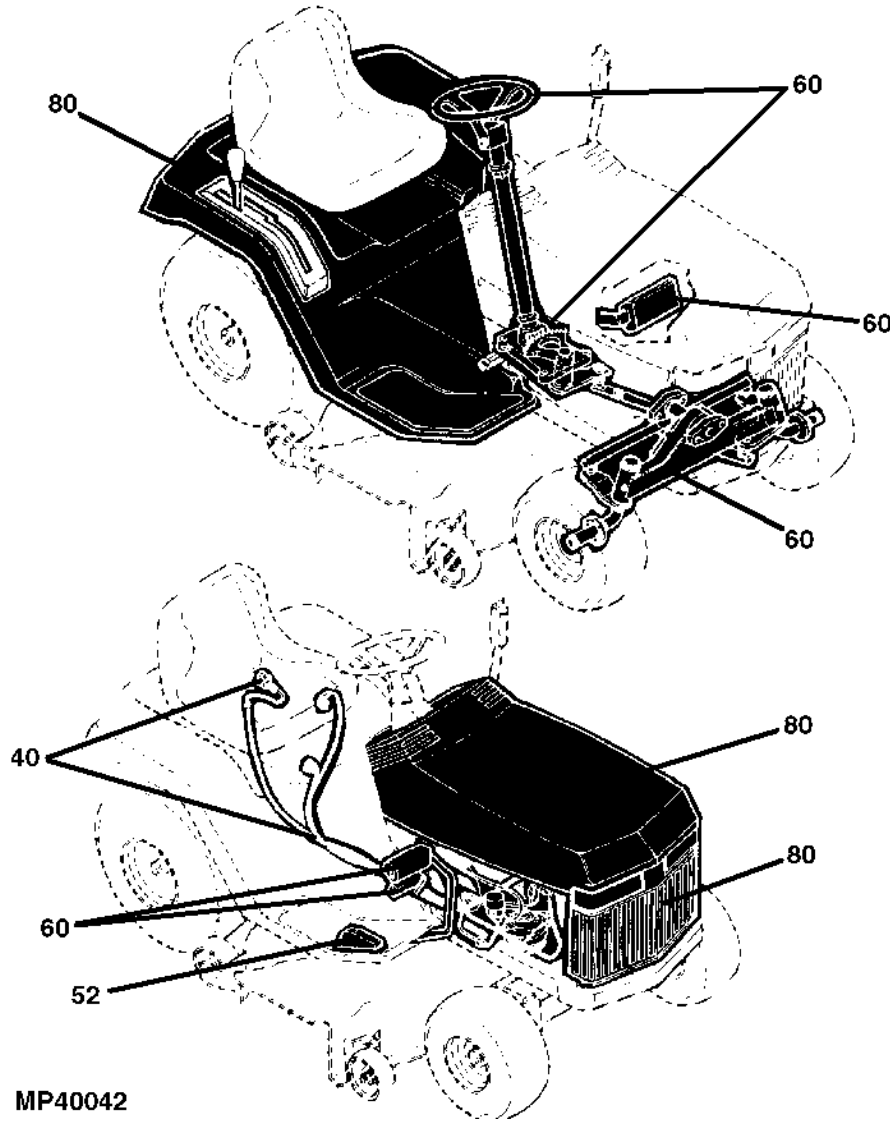
10-1

LX172, LX173, LX176, LX178, LX186 AND LX188 LAWN TRACTORS

PRIMARY INDEX
INDEX PRINCIPAL
HAUPTINDEX
INDICE PRINCIPALE
INDICE DE MATERIAS
HUVUDFORTECKNING

MP40042 -UN-28AUG07

15-	1
20-	1
22-	1
30-	1
40-	1
50-	1
52-	1
60-	1
80-	1
85-	1



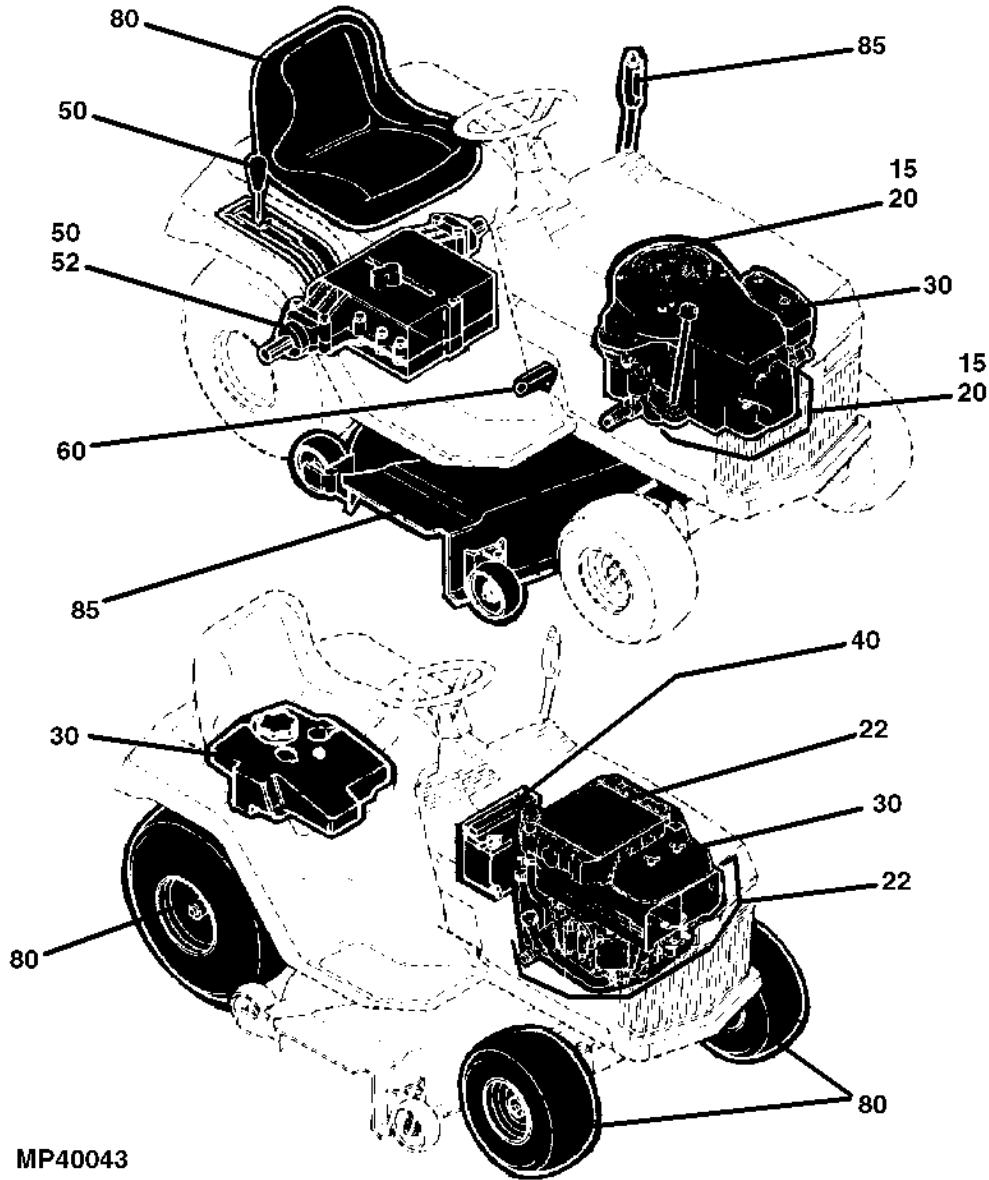
MP40042

10-2

LX172, LX173, LX176, LX178, LX186 AND LX188 LAWN TRACTORS

PRIMARY INDEX
 INDEX PRINCIPAL
 HAUPTINDEX
 INDICE PRINCIPALE
 INDICE DE MATERIAS
 HUVUDFORTECKNING

MP40043 -UN-28AUG07



15-	1
20-	1
22-	1
30-	1
40-	1
50-	1
52-	1
60-	1
80-	1
85-	1

MP40043

**Thanks very much for your reading,
Want to get more information,
Please click here, Then get the complete
manual**

JustClickHere 

NOTE:

**If there is no response to click on the link above,
please download the PDF document first, and then
click on it.**

**Have any questions please write to me:
admin@servicemanualperfect.com**

10-3

LX172, LX173, LX176, LX178, LX186 AND LX188 LAWN TRACTORS

TRANSLATED REMARKS

MP8477 -UN-01JAN94

	ENGLISH	FRANCAIS	DEUTSCH
ALSO ORDER	Also order	Commander aussi	Ebenso bestellen
AMP	Ampere	Ampère	Ampere
AND	And	Et	Und
APPL ONLY	This application only	Uniquement pour cette utilisation	Nur für diese Anwendung
AR	As required	Selon le besoin	Nach bedarf
ASSY	Complete assembly	Ensemble complet	Komplette Baugruppe
COMPLETE	Complete	Complet	Vollständig
FRONT	Front	Avant	Vorn
HP	Horsepower	Puissance en cv	Pferdestärke
ID	Inside diameter	Diamètre intérieur	Innendurchmesser
INCLUDES	Includes	Comprend	Enthält
INCLUDES PARTS MARKED	Includes parts marked	Comprend les pièces marquées	Enthält gekennzeichnete Teile
KIT	Kit	Jeu	Satz
LH	Left-hand	Gauche	Links
LOWER	Lower	Inférieur	Unten
MAKE FROM	Make from	Réaliser avec	Herstellen von
MARKED	Marked	Marqué	Markiert
MFWD	Mechanical front wheel drive	Traction avant mécanique	Mechanischer frontradantrieb
NLA	No longer available	Epuisé	Nicht mehr lieferbar
NOT USED THIS APPL	Not used this application	Ne sert pas pour cette application	In dieser Anwendung nicht benutzt
NSEP	Not supplied separately	Non livré séparément	Einzeln nicht lieferbar
OD	Outside diameter	Diamètre extérieur	Außendurchmesser
OPTIONAL	Optional	En option	Wahlweise
OR	Or	Ou	Oder
ORDER	Order	Commander	Bestelle
OS	Oversize	Surdimensionné	Uebergrosse
PKG	Package	Par paquet de	Verpackt zu
REAR	Rear	Arrière	Hinten
RH	Right-hand	Droit	Rechts
SN	Serial number	Numéro de série	Seriennummer
STD	Standard	Standard	Standard
SUB	Replaced by	Remplacé par	Ersetzt durch
SUB FOR	Substitutes for	Remplace	Ersatz für
TEETH	Gear and sprocket teeth number	Nombre de dents des pignons	Zahnezahl für Ketten-und Zahnrad
UPPER	Upper	Supérieur	Oben
US	Undersize	Sous-dimensionné	Untergrösse
USE WITH	Use with	A utiliser avec	Benutzen mit
W/	With	Avec	Mit
W/O	Without	Sans	Ohne

MP8477

10-4

LX172, LX173, LX176, LX178, LX186 AND LX188 LAWN TRACTORS

TRANSLATED REMARKS

MP8478 -UN-01JAN94

	ITALIANO	ESPAÑOL	SVENSKA
ALSO ORDER	Ordinare anche	Pedir también	Beställ även
AMP	Ampere	Amperio	Ampere
AND	E	Y	Och
APPL ONLY	Solo per questo impiego	Tan sólo para este propósito	Endast för denna användning
AR	Secondo necessità	Según necesidad	Vid behov
ASSY	Gruppo completo	Conjunto completo	Komplett sats
COMPLETE	Completo	Completo	Fullständig
FRONT	Anteriore	Frente	Fram
HP	Potenza in cavalli	Potencia	Hästkraft
ID	Diámetro interno	Diámetro interior	Inre diameter
INCLUDES	Include	Incluye	Inkluderar
INCLUDES PARTS MARKED	Include le parti indicate	Incluye las piezas marcadas	Inkluderar markerade delar
KIT	Corredo	Juego	Sats
LH	Sinistra	Izquierda	Vänster sida
LOWER	Inferiore	Más bajo	Nedre
MAKE FROM	Fabbricare di	Hacer de	Tillverka av
MARKED	Marcato	Marcado	Märkt
MFWD	Trazione anteriore meccanica	Tracción delantera mecanica	Mekanisk framhjulsdraft
NLA	Non piu' disponibile	Descontinuado	Ej längre tillgänglig
NOT USED THIS APPL	Non usato in questa applicazione	No se usa en esta aplicacion	Ej använd i detta sammanhang
NSEP	Non fornito separatamente	No se suministra por separado	Kan ej erhållas separat
OD	Diámetro externo	Diámetro exterior	Yttre diameter
OPTIONAL	Opzionale	Opcional	Valfri
OR	Oppure	O	Eller
ORDER	Ordinare	Pídase	Order, rekvisition
OS	Extra grande	Sobretamaño	Överdimensionerad
PKG	in confezione da	Por paquete de	I sats eller paket
REAR	Posteriore	Trasero	Bak, bakre
RH	Destra	Derecha	Höger
SN	Numero di serie	Número de serie	Serienummer
STD	Standard	Normal	Standard
SUB	Sostituito per	Sustituido por	Ersatt med
SUB FOR	Sostituisce	Sustitucion para	Ersätter
TEETH	No. denti corona o pignone	Número de dientes de los engranajes	Antal tänder på drev och kugghjul
UPPER	Superiore	Superior	Ovre
US	Extra piccolo	Subtamaño	Underdimensionerad
USE WITH	Usare con	Usar con	Använd med
W/	Con	Con	Med, inklusive
W/O	Senza	Sin	Utan, exklusive

MP8478



LX172 LAWN TRACTOR

(WITH 38-INCH MOWER DECK)

1991 MODEL (SN M0L172X010001-040000)
1992 MODEL (SN M0L172X040001-070000)
1993 MODEL (SN M0L172X070001-090000)
1994 MODEL (SN M0L172X090001-110000)
1995 MODEL (SN M0L172X110001-130000)
1996 MODEL (SN M0L172X130001-160000)
1997 MODEL (SN M0L172X160001-999999)

(WITH 44-INCH MOWER DECK)

1995 MODEL (SN M0L172C110001-130000)
1996 MODEL (SN M0L172C130001-160000)
1997 MODEL (SN M0L172C160001-999999)

(WITH 48-INCH MOWER DECK)

1995 MODEL (SN M0L172B110001-130000)
1996 MODEL (SN M0L172B130001-160000)
1997 MODEL (SN M0L172B160001-999999)

(WITHOUT MOWER DECK)

1994 MODEL (SN M0L172A090001-110000)
1995 MODEL (SN M0L172A110001-130000)
1996 MODEL (SN M0L172A130001-160000)
1997 MODEL (SN M0L172A160001-999999)

(SPECIFICATIONS AND DESIGN SUBJECT TO CHANGE WITHOUT NOTICE)

10-6

LX172, LX173, LX176, LX178, LX186 AND LX188 LAWN TRACTORS

MP7668

-UN-01JAN94



LX173 LAWN TRACTOR

(WITH 38-INCH MOWER DECK)

1996 MODEL (SN M0L173X150001-160000)
1997 MODEL (SN M0L173X160001-180000)
1998 MODEL (SN M0L173X180001-999999)

(WITH 44-INCH MOWER DECK)

1996 MODEL (SN M0L173C150001-160000)
1997 MODEL (SN M0L173C160001-180000)
1998 MODEL (SN M0L173C180001-999999)

(WITH 48-INCH MOWER DECK)

1996 MODEL (SN M0L173B150001-160000)
1997 MODEL (SN M0L173B160001-180000)
1998 MODEL (SN M0L173B180001-999999)

(WITHOUT MOWER DECK)

1996 MODEL (SN M0L173A150001-160000)
1997 MODEL (SN M0L173A160001-180000)
1998 MODEL (SN M0L173A180001-999999)

(SPECIFICATIONS AND DESIGN SUBJECT TO CHANGE WITHOUT NOTICE)



LX176 LAWN TRACTOR

(WITH 38-INCH MOWER DECK)

1991 MODEL (SN M0L176X010001-040000)
1992 MODEL (SN M0L176X040001-070000)
1993 MODEL (SN M0L176X070001-090000)
1994 MODEL (SN M0L176X090001-110000)
1995 MODEL (SN M0L176X110001-130000)
1996 MODEL (SN M0L176X130001-160000)
1997 MODEL (SN M0L176X160001-180000)
1998 MODEL (SN M0L176X180001-999999)

(WITH 44-INCH MOWER DECK)

1998 MODEL (SN M0L176C180001-999999)

(WITH 48-INCH MOWER DECK)

1995 MODEL (SN M0L176A110001-130000)
1996 MODEL (SN M0L176A130001-160000)
1997 MODEL (SN M0L176A160001-180000)
1998 MODEL (SN M0L176A180001-999999)

(WITHOUT MOWER DECK)

1995 MODEL (SN M0L176B110001-130000)
1996 MODEL (SN M0L176B130001-160000)
1997 MODEL (SN M0L176B160001-180000)
1998 MODEL (SN M0L176B180001-999999)

(SPECIFICATIONS AND DESIGN SUBJECT TO CHANGE WITHOUT NOTICE)



MP8889

LX178 LAWN TRACTOR

(WITH 38-INCH MOWER DECK)

1991 MODEL (SN M0L178X010001-040000)
1992 MODEL (SN M0L178X040001-070000)
1993 MODEL (SN M0L178X070001-090000)
1994 MODEL (SN M0L178X090001-110000)
1995 MODEL (SN M0L178X110001-130000)
1996 MODEL (SN M0L178X130001-160000)
1997 MODEL (SN M0L178X160001-180000)
1997 MODEL (SN M0L178N160001-180000) (MOTORSPORT EDITION)
1998 MODEL (SN M0L178X180001-999999)
1998 MODEL (SN M0L178N180001-999999) (MOTORSPORT EDITION)

(WITH 44-INCH MOWER DECK)

1993 MODEL (SN M0L178A070001-090000)
1994 MODEL (SN M0L178A090001-110000)
1995 MODEL (SN M0L178A110001-130000)
1996 MODEL (SN M0L178A130001-160000)
1997 MODEL (SN M0L178A160001-180000)
1998 MODEL (SN M0L178A180001-999999)

(WITHOUT MOWER DECK)

1995 MODEL (SN M0L178B110001-130000)
1996 MODEL (SN M0L178B130001-160000)
1997 MODEL (SN M0L178B160001-180000)
1998 MODEL (SN M0L178B180001-999999)

(SPECIFICATIONS AND DESIGN SUBJECT TO CHANGE WITHOUT NOTICE)

10-9

LX172, LX173, LX176, LX178, LX186 AND LX188 LAWN TRACTORS

MP8889

-UN-01JAN94



LX186 LAWN TRACTOR

LX186 (WITH 48-INCH MOWER DECK)

1991 MODEL (SN M0L186X010001-040009)

(SPECIFICATIONS AND DESIGN SUBJECT TO CHANGE WITHOUT NOTICE)

10-10

LX172, LX173, LX176, LX178, LX186 AND LX188 LAWN TRACTORS

MP8889 -UN-01JAN94



MP8889

LX188 LAWN TRACTOR

(WITH 44-INCH MOWER DECK)

1993 MODEL (SN M0L188A070001-090000)
1994 MODEL (SN M0L188A090001-110000)
1995 MODEL (SN M0L188A110001-130000)
1996 MODEL (SN M0L188A130001-160000)
1997 MODEL (SN M0L188A160001-180000)
1998 MODEL (SN M0L188A180001-999999)

(WITH 48-INCH MOWER DECK)

1992 MODEL (SN M0L188X040001-070000)
1993 MODEL (SN M0L188X070001-090000)
1994 MODEL (SN M0L188X090001-110000)
1995 MODEL (SN M0L188X110001-130000)
1996 MODEL (SN M0L188X130001-160000)
1997 MODEL (SN M0L188X160001-180000)
1998 MODEL (SN M0L188X180001-999999)

(WITHOUT MOWER DECK)

1994 MODEL (SN M0L188B090001-110000)
1995 MODEL (SN M0L188B110001-130000)
1996 MODEL (SN M0L188B130001-160000)
1997 MODEL (SN M0L188B160001-180000)
1998 MODEL (SN M0L188B180001-999999)

(SPECIFICATIONS AND DESIGN SUBJECT TO CHANGE WITHOUT NOTICE)

10-11

LX172, LX173, LX176, LX178, LX186 AND LX188 LAWN TRACTORS

MEMORANDA

10-12

LX172, LX173, LX176, LX178, LX186 AND LX188 LAWN TRACTORS

PRODUCT IDENTIFICATION AND SERIAL NUMBER PLATE

AN INDIVIDUAL PRODUCT IDENTIFICATION AND SERIAL NUMBER IS ASSIGNED TO EACH MACHINE. WHEN WRITING ABOUT OR FILLING OUT WARRANTY CLAIMS, USE ALL THE CHARACTERS SHOWN ON THE PLATE.

EXAMPLE: M0L173C150001

M0- FACTORY DESIGNATION (HORICON WORKS)
L173- MODEL OR MACHINE DESIGNATION
LX173 LAWN TRACTOR
C- CONFIGURATION CODE (WITH 44-INCH MOWER DECK)
150001- SERIAL NUMBER (TRACTOR)

PRODUCT CONFIGURATION CODE

THE CONFIGURATION "ALPHA" CODE IDENTIFIES A VARIATION OF A PRODUCT. (EXAMPLE: A 116 LAWN TRACTOR MAY BE MANUFACTURED AS A HYDROSTATIC OR MANUAL UNIT, AND BE SHIPPED WITH A 970MM OR 1170MM MOWER. FOUR VARIATIONS OF THE 116 LAWN TRACTOR EXIST.)

IT ALSO IDENTIFIES DIFFERENT PRODUCTS WHICH HAVE THE SAME MODEL OR MACHINE DESIGNATION.

(EXAMPLE: 216 TRACTOR AND 216 TILLER)

IF NO CONFIGURATION "ALPHA" CODE IS REQUIRED, SPACE IS FILLED IN WITH AN "X".

SERIAL NUMBER LISTING INFORMATION

SERIAL NUMBER INFORMATION IS LISTED TO SHOW ON WHICH MACHINES EACH PART CAN BE USED; FOR EXAMPLE:

- THE PART CAN BE USED ON ALL MACHINES.
000000 - THE PART CAN BE USED ON MACHINES BEGINNING WITH THE SERIAL NUMBER LISTED.
- 000000 THE PART CAN BE USED ON MACHINES UP TO AND INCLUDING THE SERIAL NUMBER LISTED.
000000 - 000000 THE PART CAN BE USED ON MACHINES BETWEEN AND INCLUDING THE SERIAL NUMBERS LISTED.

WHEN XXXXXX'S ARE LISTED IN PLACE OF A SERIAL NUMBER, A SERIAL NUMBER CHANGE WAS MADE, BUT THE EXACT SERIAL NUMBER WAS NOT AVAILABLE WHEN THE CATALOG WAS PRODUCED.

10-13

LX172, LX173, LX176, LX178, LX186 AND LX188 LAWN TRACTORS

BOX-ENCLOSED ILLUSTRATIONS

A KEY NUMBER, SHOWN IN THE PARTS LIST, IS ASSIGNED TO A BOX ENCLOSING ALL PARTS SOLD AS A SERVICE ASSEMBLY.

BOLT AND CAP SCREW STRENGTH IDENTIFICATION

BOLTS AND CAP SCREWS REQUIRED TO HAVE HIGH-STRENGTH QUALITIES EQUIVALENT TO SAE GRADE 8 ARE IDENTIFIED THROUGHOUT THIS CATALOG BY THE DESCRIPTION HS SAE 8 (10.9 FOR METRIC). ALL STANDARD BOLTS AND CAP SCREWS ARE SAE GRADE 5 (METRIC 8.8) OR LOWER.

WHOLE GOODS LISTINGS

WHOLE GOODS ARE LISTED IN BOLD FACE TYPE. REFER TO LAWN AND GROUNDS CARE SALES MANUAL FOR WHOLE GOODS ORDERING INFORMATION. ORDER SEPARATELY. DO NOT INCLUDE ON REPLACEMENT PARTS ORDER.

DIRECTION ARROW

ARROWS ARE USED WITH ILLUSTRATIONS TO INDICATE THE FRONT OF THE UNIT. "RIGHT-HAND" AND "LEFT-HAND" SIDES ARE DETERMINED BY FACING IN THE DIRECTION OF MACHINE FORWARD TRAVEL.

TO THE CUSTOMER

THE PART NUMBERS IN THIS PARTS CATALOG WERE CORRECT AT THE TIME THIS CATALOG WAS PUBLISHED. IT IS OUR POLICY TO CONSTANTLY IMPROVE OUR MACHINES; THEREFORE, PART NUMBERS MAY CHANGE WHEN ORDERING PARTS. VERIFY PART NUMBERS THROUGH YOUR DEALER.

10-14

LX172, LX173, LX176, LX178, LX186 AND LX188 LAWN TRACTORS

SECTION INDEX

GENERAL INFORMATION.....	10
ENGINE (LX172, LX176 AND LX186).....	15
ENGINE (LX173).....	20
ENGINE (LX178 AND LX188).....	22
FUEL AND AIR.....	30
ELECTRICAL	40
POWER TRAIN (LX172 AND LX173)	50
POWER TRAIN (LX176, LX178, LX186 AND LX188).....	52
STEERING AND BRAKES.....	60
WHEELS, NON-POWERED AXLES, SHEET METAL.....	80
MOWER DECK AND LIFT LINKAGE	85
NUMERICAL INDEX	95

10-15

LX172, LX173, LX176, LX178, LX186 AND LX188 LAWN TRACTORS

ALPHABETICAL INDEX

	PAGE		PAGE
A			
ADAPTER, ENGINE OIL FILTER (LX178, LX188)	22-10	BLADES (44"/1,12 M - W/ SN)	85-12
AIR CLEANER (LX172, LX176)	30-36	BLADES (44"/1,12 M - W/O SN)	85-10
AIR CLEANER (LX173)	30-38	BLADES (48"/1,22 M)	85-20
AIR CLEANER (LX178) (LX188)	30-42	BLOCK, CYLINDER (LX172, LX176, LX186)	15-8
AIR CLEANER (LX186)	30-40	BLOCK, CYLINDER (LX178, LX188)	22-8
AIR DUCT, MUFFLER (LX172) (LX176) (LX186)	30-50	BLOWER FAN (LX172, LX176, LX186)	15-8
AIR DUCT, MUFFLER (LX173)	30-51	BLOWER FAN (LX173)	20-10
AIR DUCT, MUFFLER (LX178) (LX188)	30-52	BLOWER FAN (LX178, LX188)	22-14
AIR FILTER (LX172, LX176)	30-36	BLOWER HOUSING (LX172, LX176, LX186)	15-14
AIR FILTER (LX178) (LX188)	30-42	BLOWER HOUSING (LX178, LX188)	22-14
AIR FILTER (LX186)	30-40	BLOWER HOUSING, ENGINE (LX173)	20-9
ARM, GOVERNOR (LX172, LX176, LX186)	30-30	BOLTS, ENGINE MOUNTING (LX172, LX176, LX186)	15-8
ARM, GOVERNOR (LX178, LX188)	30-34	BOLTS, ENGINE MOUNTING (LX173)	20-4
ARM, IDLER (LX172, LX173)	50-10	BOLTS, ENGINE MOUNTING (LX178, LX188)	22-8
ARM, IDLER, TRACTION DRIVE (LX176, LX178, LX186, LX188)	52-24	BRACKET, SEAT	80-4
ARM, ROCKER (LX178, LX188)	22-11	BRACKET, TRANSAXLE MOUNTING (HYDRO) (SEE PAGE FOR SN)	52-4
ARM, SHIFT (LX172, LX173)	50-12	BRACKET, TRANSAXLE MOUNTING (HYDRO) (SEE PAGE FOR SN)	52-6
ARMS, DRAFT	85-32	BRACKETS, TRANSAXLE MOUNTING (LX176, LX178, LX186, LX188)	52-27
AXLE SHAFT (LX172, LX173) (TRANSAXLE MARKED 801-038A)	50-8	BRAKE (HYDROSTATIC TRANSAXLE) (SEE PAGE FOR SN)	52-20
AXLE SHAFT (LX172, LX173) (TRANSAXLE MARKED 801-060)	50-4	BRAKE (HYDROSTATIC TRANSAXLE) (SEE PAGE FOR SN)	52-22
AXLE, FRONT	60-4	BRAKE (LX172, LX173) (TRANSAXLE MARKED 801-060)	50-2
AXLE, REAR (HYDROSTATIC TRANSAXLE) (SEE PAGE FOR SN)	52-2	BRAKE DISK (LX172, LX173) (TRANSAXLE MARKED 801-038A)	50-6
AXLE, REAR (HYDROSTATIC TRANSAXLE) (SEE PAGE FOR SN)	52-3	BRAKE DISK (LX172, LX173) (TRANSAXLE MARKED 801-060)	50-2
AXLE, REAR (LX172, LX173) (TRANSAXLE MARKED 801-038A)	50-8	BRAKE LEVER (LX172, LX173) (TRANSAXLE MARKED 801-038A)	50-6
AXLE, REAR (LX172, LX173) (TRANSAXLE MARKED 801-060)	50-4	BRAKE LEVER (LX172, LX173) (TRANSAXLE MARKED 801-060)	50-2
B			
BAFFLE KIT, FRONT (48"/1,22 M)	85-26	BRAKE LINKAGE (LX176, LX178, LX186, LX188)	60-8
BAFFLE KIT, REAR (48"/1,22 M)	85-26	BRAKE PAD (LX172, LX173) (TRANSAXLE MARKED 801-038A)	50-6
BAGGER, GRASS (SEE CATALOG 2111)	10-6	BRAKE PAD (LX172, LX173) (TRANSAXLE MARKED 801-060)	50-2
BAGGER, GRASS (SEE MPC 8284, PC 2111)	10-5	BRAKE PEDAL (LX176, LX178, LX186, LX188)	60-8
BALANCE SHAFT (LX173)	20-4	BRAKE PEDAL, SHAFT, AND LINKAGE (LX172, LX173)	60-6
BATTERY	40-16	BRAKES (LX172, LX173) (TRANSAXLE MARKED 801-038A)	50-6
BATTERY CHARGER KIT	40-17	BULB, HEADLIGHT (LX172, LX176, LX186, LX178, LX188)	80-6
BELT (38"/97 CM)	85-2	BULB, HEADLIGHT (LX173)	80-8
BELT (44"/1,12 M - W/ SN)	85-12	BULB, INDICATOR (LX172, LX176)	40-21
BELT (44"/1,12 M - W/O SN)	85-10	BULB, INDICATOR (SEE PAGE FOR SN) (LX172, LX173, LX176)	40-6
BELT (48"/1,22 M)	85-20	BULB, INDICATOR (SEE PAGE FOR SN) (LX172, LX176)	40-4
BELT GUIDE (IDLERS) (LX172, LX173)	50-10	BULB, INDICATOR (SEE PAGE FOR SN) (LX172, LX176, LX186)	40-2
BELT GUIDE (TRANSAXLE) (LX172, LX173)	50-12	BULB, INDICATOR (SEE PAGE FOR SN) (LX178, LX188)	40-8
BELT GUIDE, TRACTION DRIVE (IDLERS) (LX176, LX178, LX186, LX188)	52-24	BULB, INDICATOR (SEE PAGE FOR SN) (LX178, LX188)	40-10
BELT GUIDE, TRACTION DRIVE (ON HYDRO TRANSAXLE) (SEE PAGE FOR SN)	52-4	BULB, INDICATOR (SEE PAGE FOR SN) (LX178, LX188)	40-12
BELT GUIDE, TRACTION DRIVE (ON HYDRO TRANSAXLE) (SEE PAGE FOR SN)	52-6	BUMPER (LX172, LX176, LX186, LX178, LX188)	80-6
BELT SHIELD (44"/1,12 M - W/ SN)	85-16	BUMPER (LX173)	80-8
BELT SHIELD (44"/1,12 M - W/O SN)	85-14		
BELT SHIELD (48"/1,22 M)	85-22		
BELT, TRACTION (LX176, LX178, LX186, LX188)	52-24		
BELT, TRACTION DRIVE (LX172, LX173)	50-10		
BLADE, MULCH (38"/97 CM)	85-8		
BLADES (38"/97 CM)	85-2		

10-16

LX172, LX173, LX176, LX178, LX186 AND LX188 LAWN TRACTORS

ALPHABETICAL INDEX - CONTINUED

	PAGE		PAGE
C			
CABLE, THROTTLE (SN -160000).....	30-44	CLUTCH, ELECTROMAGNETIC PTO (WARNER) (LX172, LX176, LX186).....	40-14
CABLE, THROTTLE (SN 160001-).....	30-45	CLUTCH, ELECTROMAGNETIC PTO (WARNER) (LX173, LX178, LX188).....	40-15
CABLES, BATTERY.....	40-16	COIL, IGNITION (LX172, LX176, LX186).....	15-16
CAMSHAFT (LX172, LX176, LX186).....	15-12	COIL, IGNITION (LX173).....	20-10
CAMSHAFT (LX173).....	20-4	COIL, IGNITION (LX178, LX188).....	22-16
CAMSHAFT (LX178, LX188).....	22-11	CONNECTING ROD (LX172, LX176, LX186).....	15-10
CAP, FUEL.....	30-53	CONNECTING ROD (LX173).....	20-4
CARBURETOR (MARKED 1205350) (LX172, LX176).....	30-10	CONNECTING ROD (LX178, LX188).....	22-12
CARBURETOR (MARKED 32045 OR 32226) (LX178).....	30-14	CONTROL PANEL, GOVERNOR (ENGINE MARKED CV15S-41537) (LX173).....	30-32
CARBURETOR (MARKED 32123) (LX186).....	30-20	CONTROL PANEL, GOVERNOR (ENGINE MARKED CV15S-41571) (LX173).....	30-33
CARBURETOR (MARKED 32124) (LX172, LX176).....	30-2	CONTROL PANEL, GOVERNOR (LX172, LX176, LX186).....	30-30
CARBURETOR (MARKED 32206 OR 32411) (LX188).....	30-24	CONTROL PANEL, GOVERNOR (LX178, LX188).....	30-34
CARBURETOR (MARKED 32350) (LX172, LX176).....	30-6	COOLANT RESERVOIR (LX178, LX188).....	22-14
CARBURETOR (MARKED 32362) (LX188).....	30-26	COOLANT TEMPERATURE SWITCH (LX178, LX188).....	22-16
CARBURETOR (MARKED 32409) (LX172, LX176).....	30-4	COVER, FRONT WHEEL.....	80-10
CARBURETOR (MARKED 32410 OR 32361) (LX178).....	30-16	COVER, HYDROSTATIC TRANSAXLE (SEE PAGE FOR SN).....	52-4
CARBURETOR (MARKED 32693) (LX188).....	30-27A	COVER, HYDROSTATIC TRANSAXLE (SEE PAGE FOR SN).....	52-6
CARBURETOR (MARKED 1205393-S OR 1205376-S) (LX173).....	30-11A	COVER, PROTECTIVE TRACTOR.....	80-15
CARBURETOR GASKET KIT (LX172, LX176).....	30-8	COVER, REAR WHEEL.....	80-11
CARBURETOR GASKET KIT (LX173).....	30-12	COVER, ROCKER ARM (LX173).....	20-2
CARBURETOR GASKET KIT (LX178).....	30-18	COVER, STARTER (LX173).....	20-9
CARBURETOR GASKET KIT (LX186).....	30-22	COVER, THERMOSTAT (LX178, LX188).....	22-14
CARBURETOR GASKET KIT (LX188).....	30-28	CRANKCASE (LX172, LX176, LX186).....	15-8
CARBURETOR INSULATOR (LX172, LX176).....	30-36	CRANKCASE (LX178, LX188).....	22-8
CARBURETOR INSULATOR (LX178) (LX188).....	30-42	CRANKSHAFT (LX172, LX176, LX186).....	15-10
CARBURETOR INSULATOR (LX186).....	30-40	CRANKSHAFT (LX173).....	20-4
CASE, HYDROSTATIC TRANSAXLE (SEE PAGE FOR SN).....	52-4	CRANKSHAFT (LX178, LX188).....	22-12
CASE, HYDROSTATIC TRANSAXLE (SEE PAGE FOR SN).....	52-6	CYLINDER HEAD (LX172, LX176, LX186).....	15-8
CASE, TRANSAXLE CENTER (SEE PAGE FOR SN).....	52-12	CYLINDER HEAD (LX173).....	20-2
CASE, TRANSAXLE CENTER (SEE PAGE FOR SN).....	52-14	CYLINDER HEAD (LX178, LX188).....	22-8
CENTER CASE, TRANSAXLE (SEE PAGE FOR SN).....	52-12	D	
CENTER CASE, TRANSAXLE (SEE PAGE FOR SN).....	52-14	DAMPENER, HYDROSTATIC TRANSAXLE (SEE PAGE FOR SN).....	52-8
CHARGER KIT, BATTERY.....	40-17	DAMPENER, HYDROSTATIC TRANSAXLE (SEE PAGE FOR SN).....	52-10
CHOKE LINK (ENGINE MARKED CV15S-41537) (LX173).....	30-32	DASH PANEL.....	80-2
CHOKE LINK (ENGINE MARKED CV15S-41571) (LX173).....	30-33	DASH PANEL INDICATOR LIGHTS (LX172, LX176).....	40-21
CHOKE LINK (LX172, LX176, LX186).....	30-30	DECAL, HEADLIGHT (LX172, LX176, LX186, LX178, LX188).....	80-6
CHOKE LINK (LX178, LX188).....	30-34	DECAL, HEADLIGHT (LX173).....	80-8
CHUTE KIT, PLASTIC (48"/1,22 M).....	85-24	DECALS, (LX176) (EXPORT).....	80-21
CHUTE, DISCHARGE (38"/97 CM).....	85-4	DECALS, (LX178).....	80-23
CHUTE, DISCHARGE (48"/1,22 M).....	85-22	DECALS, (LX178) (FRENCH CANADIAN).....	80-26
CLUTCH PEDAL, SHAFT, AND LINKAGE (LX172, LX173).....	60-6	DECALS, (LX178) (EXPORT).....	80-25
CLUTCH SPRING (LX172, LX173).....	50-10	DECALS, (LX178) (MOTORSPORTS).....	80-24
		DECALS, (LX186).....	80-27
		DECALS, (LX186) (EXPORT).....	80-28
		DECALS, (LX188).....	80-29
		DECALS, (LX188) (FRENCH CANADIAN).....	80-31
		DECALS, (LX188) (EXPORT).....	80-30
		DECALS, ENGINE (LX172, LX176, LX186).....	15-18
		DECALS, ENGINE (LX178, LX188).....	22-18

ALPHABETICAL INDEX - CONTINUED

PAGE	PAGE
DECALS, MOWER DECK (38"/97CM) (48"/1,22 M)	85-38
DECALS, MOWER DECK (44"/1, 12 M)	85-36
DECALS, MOWER DECK (EXPORT) (38"/97CM) (48"/1,22 M)	85-40
DECALS, MOWER DECK (EXPORT) (44"/1, 12 M)	85-36
DECALS, TRACTOR (LX172)	80-16
DECALS, TRACTOR (LX172) (FRENCH CANADIAN)	80-18
DECALS, TRACTOR (LX172) (EXPORT)	80-17
DECALS, TRACTOR (LX173)	80-19
DECALS, TRACTOR (LX176)	80-20
DECALS, TRACTOR (LX176) (FRENCH CANADIAN)	80-22
DECK, FENDER	80-4
DECK, MOWER (38"/97 CM)	85-4
DECK, MOWER (44"/1, 12 M - W/ SN)	85-16
DECK, MOWER (44"/1, 12 M - W/O SN)	85-14
DECK, MOWER (48"/1, 22 M)	85-22
DEFLECTOR, CARBURETOR HEAT (LX173)	30-38
DEFLECTOR, DISCHARGE (44"/1, 12 M - W/ SN)	85-16
DEFLECTOR, DISCHARGE (44"/1, 12M - W/O SN)	85-14
DEFLECTOR, EXHAUST PIPE (LX188)	80-2
DEFLECTOR, MUFFLER (LX172) (LX176) (LX186)	30-50
DEFLECTOR, MUFFLER (LX173)	30-51
DEFLECTOR, MUFFLER (LX178) (LX188)	30-52
DEFLECTOR, MULCH (38"/97 CM)	85-8
DIFFERENTIAL GEARS (HYDRO TRANSAXLE) (SEE PAGE FOR SN)	52-2
DIFFERENTIAL GEARS (HYDRO TRANSAXLE) (SEE PAGE FOR SN)	52-3
DIPSTICK, ENGINE OIL (LX172, LX176, LX186)	15-10
DIPSTICK, ENGINE OIL (LX172, LX176, LX186)	15-12
DIPSTICK, ENGINE OIL (LX173)	20-8
DIPSTICK, ENGINE OIL (LX178, LX188)	22-10
DISCHARGE CHUTE (38"/97 CM)	85-4
DISCHARGE CHUTE (48"/1, 22 M)	85-22
DISCHARGE DEFLECTOR (44"/1, 12M - W/O SN)	85-14
DISCHARGE DEFLECTOR (44"/1, 12 M - W/ SN)	85-16
DISK, BRAKE (LX172, LX173) (TRANSAXLE MARKED 801-038A)	50-6
DISK, BRAKE (LX172, LX173) (TRANSAXLE MARKED 801-060)	50-2
DRAFT ARMS	85-32
DRAG LINK	60-2
DRAIN PLUG, ENGINE OIL (LX172, LX176, LX186)	15-12
DRAIN PLUG, ENGINE OIL (LX173)	20-8
DRAIN PLUG, ENGINE OIL (LX178, LX188)	22-10
DRUM, BRAKE (HYDROSTATIC TRANSAXLE) (SEE PAGE FOR SN)	52-20
DRUM, BRAKE (HYDROSTATIC TRANSAXLE) (SEE PAGE FOR SN)	52-22
E	
ELECTROMAGNETIC PTO CLUTCH (WARNER) (LX172, LX176, LX186)	40-14
ELECTROMAGNETIC PTO CLUTCH (WARNER) (LX173, LX178, LX188)	40-15
ELEMENT, AIR FILTER (LX172, LX176)	30-36
ELEMENT, AIR FILTER (LX173)	30-38
ELEMENT, AIR FILTER (LX178) (LX188)	30-42
ELEMENT, AIR FILTER (LX186)	30-40
ENGINE (LX172, LX176, LX186)	15-2
ENGINE (LX173)	20-4
ENGINE (LX178, LX188)	22-2
ENGINE DECALS (LX172, LX176, LX186)	15-18
ENGINE DECALS (LX178, LX188)	22-18
ENGINE GASKET KIT (LX172, LX176)	15-4
ENGINE GASKET KIT (LX178)	22-4
ENGINE GASKET KIT (LX186)	15-6
ENGINE GASKET KIT (LX188)	22-6
ENGINE MOUNTING BOLTS (LX172, LX176, LX186)	15-8
ENGINE MOUNTING BOLTS (LX178, LX188)	22-8
ENGINE SHEAVE (LX176, LX178, LX186, LX188)	52-24
ENGINE SHEAVE (LX172, LX173)	50-10
EXHAUST VALVE (LX172, LX176, LX186)	15-12
EXHAUST VALVE (LX173)	20-2
EXHAUST VALVE (LX178, LX188)	22-11
F	
FAN, BLOWER (LX172, LX176, LX186)	15-8
FAN, ENGINE COOLING (LX178, LX188)	22-14
FAN, TRANSAXLE (LX176, LX178, LX186, LX188)	52-24
FENDER DECK	80-4
FILL TUBE, ENGINE OIL (LX172, LX176, LX186)	15-10
FILL TUBE, ENGINE OIL (LX173)	20-8
FILL TUBE, ENGINE OIL (LX178, LX188)	22-10
FILTER, AIR (LX172, LX176)	30-36
FILTER, AIR (LX173)	30-38
FILTER, AIR (LX178) (LX188)	30-42
FILTER, AIR (LX186)	30-40
FILTER, ENGINE OIL (LX172, LX176, LX186)	15-12
FILTER, ENGINE OIL (LX173)	20-8
FILTER, ENGINE OIL (LX178, LX188)	22-10
FILTER, FUEL	30-53
FILTER, TRANSAXLE (SEE PAGE FOR SN)	52-12
FILTER, TRANSAXLE (SEE PAGE FOR SN)	52-14
FLYWHEEL (LX172, LX176, LX186)	15-16
FLYWHEEL (LX173)	20-10
FLYWHEEL (LX178, LX188)	22-16
FOAM, BUMPER (LX172, LX176, LX186, LX178, LX188)	80-6
FOAM, BUMPER (LX173)	80-8
FOOTREST MAT	80-4
FRAME	80-2
FRAME REINFORCEMENT KIT (LX176, LX178, LX186, LX188)	52-27
FRONT AXLE	60-4
FRONT WEIGHT BRACKET KIT	80-12
FRONT WHEEL	80-10
FRONT WHEEL WEIGHT KIT	80-14
FUEL FILTER	30-53
FUEL PUMP (LX172) (LX176) (LX186)	30-46
FUEL PUMP (LX178) (LX188)	30-48